

Good Shepherd School's



**2008-2009 Annual Education Results report
2009-2010 Education Plan**

Table of Contents

Accountability Statement	Page 3
Mission , Vision.....	Page 3
Beliefs	Page 4
Issues	Page 5
Priorities	Page 5
Local Priorities	Page 6
Communication	Page 6
Accountability Statement	Page 7
Performance Measures	Page 8
Overriding Goal	Page 8
Goal # 1	Page 10
Goal #2	Page 15
Goal #3	Page 25
Goal #4	Page 28
School PD Plan	Page 29
School Profile	Page 30

Accountability Statement

Good Shepherd has the responsibility to provide a Catholic Education to each child who attends school so they have the opportunity to develop spiritually, morally, socially, intellectually and physically in a manner that is modeled on the life of Jesus Christ.

The school has the formal responsibility to ensure that our Catholic beliefs and traditions permeate all aspects of the school experience.

The child is the center of the education that is provided. The Catholic school community must provide students the opportunity to reach their full potential as learners.

Vision

Good Shepherd School will strive to provide a unique and inviting Catholic learning environment that links the home, the parish and the community.

Resources will be distributed fairly so all students have an opportunity to learn in a child-centered, flexible, safe and caring learning environment.

A strong, well informed teaching staff, with an eye to the future, will provide dynamic and innovative programs in well-planned school facilities.

Students will be provided with the opportunity to live the values they are taught. Minorities will be successful, and special students needs and disabilities accommodated. Graduates will be prepared so they are motivated life-long learners grounded in the Catholic faith.

Mission

To improve student learning in a Christ centered Catholic environment where high standards prepare the children to become successful citizens in our changing world.

Motto

“At Good Shepherd we’ve got **C.L.A.S.S**” (Caring, Learning, Academic Success and Sharing)

Beliefs

We value:

- ▶ Catholic Education.
- ▶ God-given talents.
- ▶ Excellence in performance.
- ▶ Self-discipline and personal growth.
- ▶ A safe and caring environment.
- ▶ Uniqueness in every individual.
- ▶ Teamwork
- ▶ Life-long learning
- ▶ Input from stakeholders

Therefore, we believe:

- ▶ Christ is our guide and teacher.
- ▶ Spiritual growth must be fostered in our students.
- ▶ The child is the centre of the school system.
- ▶ Parents are the child's primary educators.
- ▶ In providing staff with opportunities for professional development.
- ▶ All students can learn and experience success
- ▶ Students learn best when the partnership between the home, the church, the school and community is strong.
- ▶ Growth is best achieved in a positive learning environment.
- ▶ Technology can assist in the learning process.
- ▶ Individuals are responsible and accountable.
- ▶ Students will be prepared for their futures.
- ▶ Resources must be expended where they have the most impact.
- ▶ All school personnel are called to model Catholic values for students.

Issues:

Issues taken into account in goal development:

- ▶ Maintaining a Catholic school environment.
- ▶ Improving standards of achievement.
- ▶ Enhancing special education and counseling services.
- ▶ Teacher retention, ensuring high quality teaching.
- ▶ Maintaining comprehensive curricular and extra-curricular programs.
- ▶ Upgrading aging school facilities.
- ▶ Improving access to technology to support 21 century learners.
- ▶ Sustaining viable schools, programs and services.
- ▶ Sustainable funding.
- ▶ Improving Aboriginal learners' opportunities and success through the FNMI programming.

Trends that require consideration:

- ▶ Increasing dependence on schools for faith development.
- ▶ Increasing dependence of students on schools for social and emotional support.
- ▶ Fragmentation of the traditional family unit.
- ▶ Growing numbers of students with special needs.
- ▶ Teacher/Administrator shortages.
- ▶ Increasing transient populations.
- ▶ Rapidly evolving technology and online services.
- ▶ Declining enrolments/rural to urban migration.
- ▶ Increasing health concerns because of nutrition and inactive youth

Priorities:

- ▶ Improve reading comprehension.
- ▶ Improve learning through effective use of communication technology.
- ▶ Improve children's access to services through coordination of services.
- ▶ Improve community satisfaction with education.
- ▶ Improve programs, results and reporting for First Nations, Métis and Inuit Learners.

Local Priorities:

- ▶ Maintain Catholic identity of our schools.
- ▶ Maintain the family, school, parish relationship.
- ▶ Improve effective school councils.
- ▶ Promote French Immersion programming.
- ▶ Maintain safe and caring schools.
- ▶ Improve respect students have for each other.
- ▶ Maintain community partnerships.
- ▶ Develop effective leadership.
- ▶ Improve student learning through implementation of 21 Century Learner (AISI Project).
- ▶ Maintain parental involvement in schools.

Communication:

This report is made available to parents and the public on the Good Shepherd website at <http://www.hfcrd.ab.ca/goodshepherd/index.htm> and copies are also provided to schools, school councils, parishes, local media and MLA's. The AISI Annual Report can be accessed at <http://www.hfcrd.ab.ca/AISI%20Project%20Final%20Report%20-%20APFR%202006-07.pdf> (pending approval from Alberta Education) and the Class Size report can also be accessed on the website at <http://www.hfcrd.ab.ca/averageclasssize.htm> Copies are available upon request. Individual school Results Reports are communicated to the school council and made available to parents and the public.

This report is a summary of Good Shepherd School's achievements for the 2007-2008 school year based on the 2007/08 – 2009/10 Three Year Education Plan. It serves as a tool to continue monitoring improvement in the school and provides accountability to stakeholder.

Performance Measures

Overriding Goal: To strengthen the Catholic school experience for students by supporting permeation of Catholic teaching in all aspects of the school program.

Outcome: Schools have a distinctive Catholic atmosphere.

Performance Measure	2004-05	2005-06	2006-07	2007-08	2008-09
Percentage of parents satisfied with the Catholic atmosphere of the schools.	98%	99%	99%	96%	100%
Percentage of parents who attend mass monthly.	64%	49%	53%	39%	63%
Percentage of teachers who attend mass monthly.	84%	75%	87%	78%	87%

Comment on Results:

- Catholic atmosphere of the school reached 100 % acceptance by respondents (225 parents responded)

Strategies

- Continue to hold daily assemblies
- Enhance classroom prayer corners (provide teachers with in-service on how to use these corners more effectively)
- Continue daily staff and student prayer
- Enhance courtyard mural to include student work
- Continue to promote active participation of Priest in the school
- Continue to have a member of the Parish council on School Council
- Continue to plan student masses in conjunction with Liturgical Calendar
- Continue to share responsibility for Sacramental Preparation
- Encourage staff to become active in Parish life

Outcome: Schools incorporate Catholic teaching into the school environment.

Performance Measure	2004-05	2005-06	2006-07	2007-08	2008-09
Percentage of parents who are satisfied that Catholic teaching permeates the school environment.	94%	97%	98%	95%	87%
Percentage of staff who participate in religious professional development.	99%	95%	96%	89%	94%

Comment on Results:

- Results for permeation has declined over the last year.

Strategies

- Continue to focus on permeation by providing staff with opportunities at PD days to reflect on on the subject
- Invite special guests in to school to help foster permeation (Chris Doll, Sr. Mary- Jean, Fr. Joe)
- Continue to emphasis spiritual development of children to all staff.
- Change displays in courtyard to reflect current spiritual events.
- Continue to emphasis maintaining a positive Catholic (Christ Like) attitude when dealing with students, parents and staff

Outcome: Schools work closely with parishes and families in the community.

Performance Measure	2004-05	2005-06	2006-07	2007-08	2008-09
Percentage of parents who are satisfied with the parish, the school and the family working closely together.	95%	96%	94%	95%	93%
Percentage of teachers who are satisfied with the parish, the school and the family working closely together.	91%	80%	88%	89%	94%
<p>Comment on Results:</p> <ul style="list-style-type: none"> • More emphasis needs to be on sharing information with parents regarding how the school and the parish work together <p>Strategies</p> <ul style="list-style-type: none"> • Continue to invite parish community into the schools • Promote and Provide opportunities for priest to become active in daily school life • Continue to support and work with the parish on Sacramental Preparation • Continue to encourage staff to become active in parish life • Continue to promote parish events in school newsletter 					

Outcome: Students value the spiritual and religious dimension of the school.

Performance Measure	2004-05	2005-06	2006-07	2007-08	2008-09
Percentage of students who are satisfied with the spiritual and religious dimension of the school.	94%	97%	98%	95%	91%
<p>Comment on Results:</p> <ul style="list-style-type: none"> • Results slipped a few percentage points last year. <p>Strategies</p> <ul style="list-style-type: none"> • Continue to engage students in religious activity- promoting Catholic values (SHINE, Altar Serving, Mass) • Continue to focus on making mass and celebrations relevant to students (student friendly language, relevant worship music) • Ensure the use of up to date religious curriculum • Encourage staff to use chapel more in religious classes 					

Outcome: Students actively live their faith.

Performance Measure	2004-05	2005-06	2006-07	2007-08	2008-09
Percentage of Catholic grade 6 students who have received the sacrament of First Communion.	N/A	100%	100%	100%	55%
Percentage of students who attend Parish mass monthly.	68%	65%	76%	59%	70%
<p>Comment on Results:</p> <ul style="list-style-type: none"> • 2008-2009 results drastic drop from previous years. Not sure why? Hand count was done <p>Strategies</p> <ul style="list-style-type: none"> • Continue to promote Catholic students involvement with Sacraments by communicating with the parish. 					

Goal One: High Quality Learning Opportunities for All

Outcome: Schools provide a safe and caring environment.

Performance Measure			Results (in percentages)					Target**
			2005	2006	2007	2008	2009	2009
Percentage of teacher, parent and student agreement that: students are safe at school, are learning the importance of caring for others, are learning respect for others and are treated fairly in school.	Overall (required)	School	82.1	89.7	93.0	89.8	92.5	if set
		Authority	82.4	83.7	84.9	84.5	86.0	
		Province	83.1	84.4	84.2	85.1	86.9	
	Teacher (optional)	School	93.5	96.6	99.1	99.2	98.4	
		Authority	87.4	89.6	91.3	92.6	90.2	
		Province	92.3	92.8	92.6	93.1	93.8	
	Parent (optional)	School	73.4	90.6	89.9	91.4	95.0	
		Authority	82.0	86.1	82.3	85.0	87.9	
		Province	79.9	82.1	81.7	83.2	85.3	
	Student (optional)	School	79.4	81.9	89.9	78.8	84.2	
		Authority	77.7	75.5	81.0	75.9	79.9	
		Province	77.2	78.4	78.5	79.1	81.7	

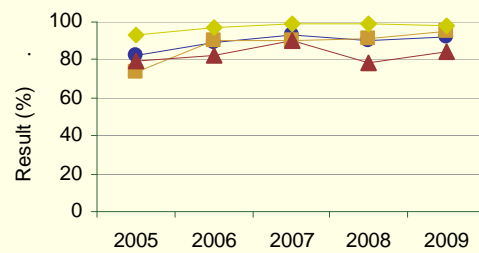
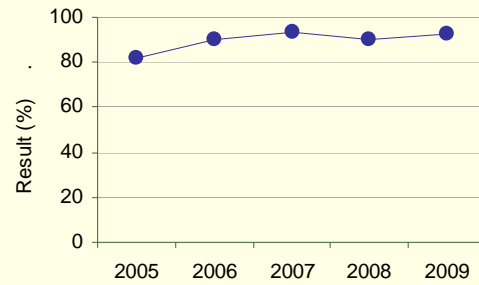
Comment on Results

- Target of 88% for overall school results surpassed.
- Overall results show an increase from previous years. Teacher and parent results show the greatest increase.
- Results are considered to be improved due to Olweus Programming, Character education, gathering as a family to pray each morning and continued implementation of school patrol and D.A.R.E education.
- RCMP are also more visible in the school which may have an impact on the feeling of safety.

Strategies

- Daily prayer incorporated into the school day.
- Religious symbols prominently displayed throughout the school.
- Religious celebration and liturgies, following liturgical calendar incorporated into the school year.
- Teachers model Catholic faith for students.
- Division Religious Institute maintained.
- School masses planned on a regular basis.
- School will offer the current religious education and family life programs.
- Staff will be supported to go to SPICE and Blue Prints.
- School will continue to support the youth ministry program.
- Staff faith formation program will continue to be maintained.
- Implement a Spiritual Formation Team
- Student conferences and retreats will continue to be developed and supported.
- Maintain a reconciliation program for Grades 4 to 6 students.
- Implement Sacramental Prep (First Reconciliation and First Communion)
- Maintain School Assembly

Graph of Overall School Results (optional)



Note: Data values have been suppressed where the number of respondents is less than 6. Suppression is marked with an asterisk (*).

** If school had set a target for 2008/09 in the three year education plan 2008/09 – 2010/11, include it in the space provided for each required measure.

Outcome: The education system meets the needs of all K–12 students, society and the economy.

Performance Measure			Results (in percentages)					Target
			2005	2006	2007	2008	2009	2009
Percentage of teachers, parents and students satisfied with the opportunity for students to receive a broad program of studies including fine arts, career, technology, and health and physical education.	Overall (required)	School	78.2	87.2	83.1	90.1	87.9	if set
		Authority	72.1	74.8	76.0	75.0	72.7	
		Province	76.7	78.1	78.5	79.4	80.3	
	Teacher (optional)	School	80.8	93.0	89.1	91.8	91.5	
		Authority	78.7	81.7	83.3	80.1	77.0	
		Province	83.6	85.2	85.7	86.4	86.8	
	Parent (optional)	School	75.6	81.4	77.2	88.3	84.4	
		Authority	72.6	73.3	76.0	78.3	75.6	
		Province	75.0	76.6	76.9	77.6	78.7	
	Student (optional)	Authority	65.1	69.4	68.8	66.7	65.7	
		Province	71.5	72.6	72.9	74.1	75.3	

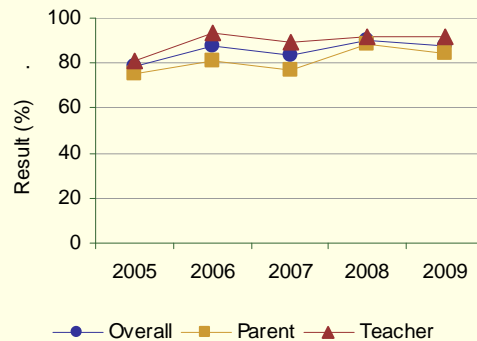
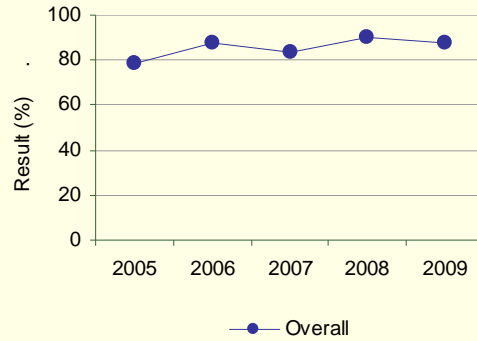
Comment on Results

- Target of 83% for overall school results surpassed.
- Growth in this category has been maintained. We have continued to integrate more fine arts, career, technology, health and physical education opportunities into our school year. This has been done through budgeting, education, bringing in outside support and supporting professional development.

Strategies

- Music teacher and band teacher hired half time
- Drama, music and art are maintained
- School choir maintained and enhanced
- Arts in Residency implemented for grade 4 and 5 students
- Budget to support programs
- Alberta Opera , Music Alive Program supported
- Professional Development in fine arts, PE, Technology and Health maintained and supported
- School continues works closely with division project link program
- Department Coordinators maintained

Graph of Overall School Results (optional)



Note: Data values have been suppressed where the number of respondents is less than 6. Suppression is marked with an asterisk (*).

Outcome: *The education system meets the needs of all K–12 students, society and the economy. (continued)*

Performance Measure			Results (in percentages)					Target
			2005	2006	2007	2008	2009	2009
Percentage of teachers, parents and students satisfied with the overall quality of basic education.	Overall (required)	School	86.4	95.1	94.5	96.4	96.8	if set
		Authority	83.9	85.9	87.7	86.8	88.7	
		Province	86.1	87.7	87.6	88.2	89.3	
	Teacher (optional)	School	95.2	98.6	99.2	100.0	99.3	
		Authority	89.2	91.3	93.0	91.8	91.9	
		Province	93.9	94.8	94.7	94.9	95.3	
	Parent (optional)	School	74.0	91.5	87.4	91.0	92.5	
		Authority	79.0	80.8	82.1	84.0	86.1	
		Province	78.9	81.6	81.8	83.0	84.4	
	Student (optional)	School	90.0	95.2	97.0	98.1	98.6	
		Authority	83.6	85.8	88.0	84.6	88.1	
		Province	85.6	86.6	86.4	86.6	88.3	

Comment on Results

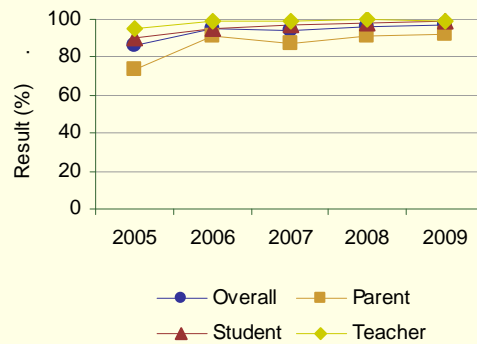
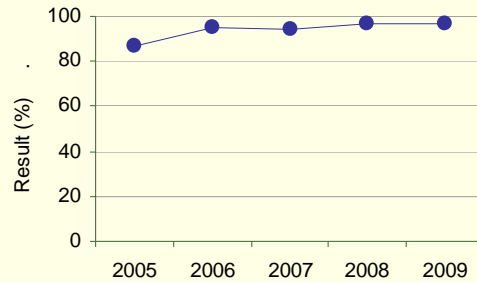
• Target of 92% for overall school results surpassed.

- Results for the past 5 years continue to increase

Strategies

- Deliver First Nations, Métis and Inuit (FNMI) programming.
- French Immersion programming maintained.
- Second language programs are offered (FSL).
- Health education promoted through Project Link.
- Maintain and enhance Differentiated Instruction.
- Maintain and enhance assessment for learning focus.
- Maintain Grade Level Achievement reporting.
- Continue to participate in Computer Assisted Assessment.
- Early Literacy program in English in place.
- Join French Resource Center in Grande Prairie
- Maintain focus for programming for students with special needs (academic counseling, library services, Peace Country Health Services and FCSS.)
- Maintain and support Library Review Committee-maintain sustainable funding for library in budget-implement suggested changes
- Build up FNMI content in school library
- Continue to actively involve parents in the decisions of the school.
- Continue to build partnerships with outside agencies (Sagitawa Friendship Center, Peace Country Health, GP Assessment team, etc.)
-

Graph of Overall School Results (optional)



Note: Data values have been suppressed where the number of respondents is less than 6. Suppression is marked with an asterisk (*).

Outcome: The education system meets the needs of all K–12 students, society and the economy. (continued)

Performance Measure			Results (in percentages)					Target
			2005	2006	2007	2008	2009	2009
Percentage of teacher, parent and student satisfaction with the accessibility, effectiveness and efficiency of programs and services for students in their community.	Overall (required)	School	59.2	64.6	68.7	78.1	73.2	if set
		Authority	70.4	70.3	72.5	73.5	69.8	
		Province	67.2	68.5	68.2	69.2	70.3	
	Teacher (optional)	School	56.5	63.0	68.2	82.4	80.8	
		Authority	74.3	75.8	78.8	78.3	76.0	
		Province	70.0	71.5	72.0	73.4	74.5	
	Parent (optional)	School	37.3	52.1	49.0	61.5	49.2	
		Authority	63.0	60.7	61.4	68.9	59.3	
		Province	54.9	56.9	55.9	56.5	58.1	
	Student (optional)	School	83.8	78.6	89.0	90.4	89.6	
		Authority	73.9	74.2	77.4	73.3	74.1	
		Province	76.7	77.1	76.8	77.7	78.4	

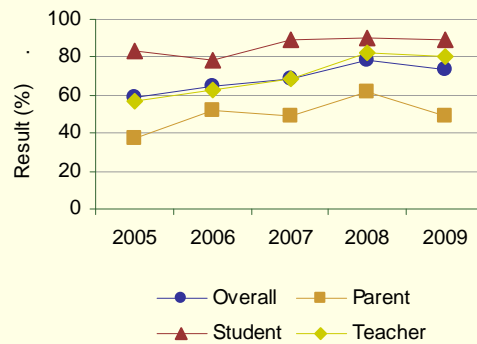
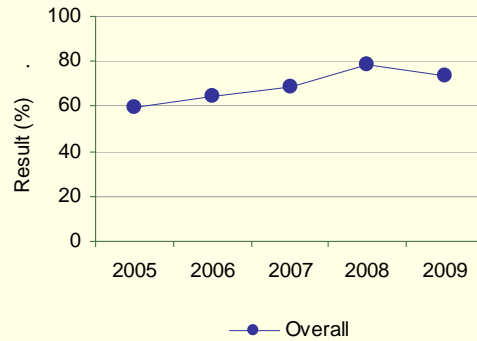
Comment on Results

- Target of 68 % for overall school results surpassed.
- Parent result lower than authority or provincial result and are lower than last years results
- More parental education needed regarding program efficiency and effectiveness

Strategies

- Continue to communicate with parents regarding support for students through SHIP and other agencies
- Continue to maintain Family School Liaison worker to support parents in accessing community agencies
- Continue to enhance services for students in regards to resource programming
- Implement Making a Difference Initiative ideas
- Invite outside agencies in during parent teacher interview days to enhance awareness

Graph of Overall School Results (optional)



Note: Data values have been suppressed where the number of respondents is less than 6. Suppression is marked with an asterisk (*).

Outcome: Children and youth at risk have their needs addressed through effective programs and supports.

Performance Measure			Results (in percentages)					Target
			2005	2006	2007	2008	2009	2009
Percentage of teacher, parent and student agreement that programs for children at risk are easy to access and timely.	Overall (required)	School	70.0	77.3	77.6	88.9	86.8	if set
		Authority	79.7	81.5	81.0	83.8	82.9	
		Province	76.9	78.6	78.3	79.5	81.4	
	Teacher (optional)	School	85.9	85.5	92.3	91.7	91.9	
		Authority	94.6	91.3	93.9	91.7	92.6	
		Province	90.6	91.6	91.2	91.9	92.5	
	Parent (optional)	School	52.1	72.4	61.7	90.5	81.4	
		Authority	71.0	75.8	70.6	82.3	77.7	
		Province	63.8	67.0	66.8	68.5	71.3	
	Student (optional)	School	72.0	74.1	78.7	84.5	87.0	
		Authority	73.7	77.4	78.4	77.4	78.3	
		Province	76.1	77.1	77.0	78.0	80.3	

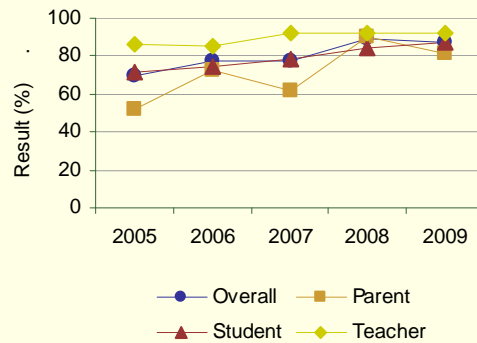
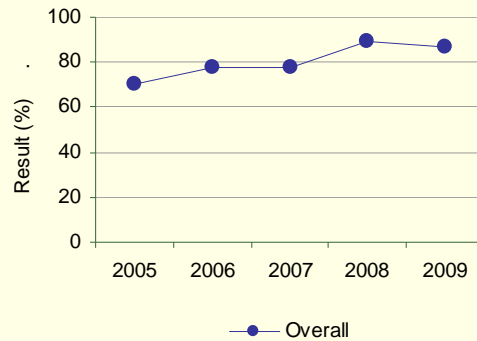
Comment on results

- Target of 81% for overall school results surpassed.
- School results have generally been lower than division results
- Parent results have fluctuated from year to year

Strategies

- Improve communication with parents
- Continue to advocate for improved services through SHIP
- Maintain support to students in the classroom through teacher assistants and certified staff
- Maintain and enhance 3 levels of students support (School Mom, Family School Liaison Worker and School Provincial Chartered Psychologist)
- Implement learning support teams

Graph of Overall School Results (optional)



Note: Data values have been suppressed where the number of respondents is less than 6. Suppression is marked with an asterisk (*).

Goal Two: Excellence in Student Learning Outcomes

Outcome: Students demonstrate high standards in learner outcomes.

Performance Measure		Results (in percentages)**												Target	
PAT Results by Number Enrolled - percentages of students who achieve the acceptable standard and the percentages who achieve the standard of excellence on Grades 3, 6 and 9 Provincial Achievement Tests (cohort results).		2005		2006		2007		2008		2009		2009			
		A	E	A	E	A	E	A	E	A	E	A	E	A	E
Grade 3	English Language Arts 3	School	90.0	16.7	95.9	22.4	84.5	8.6	90.7	16.0	92.5	9.4	if set	if set	
		Authority	86.1	11.1	87.9	10.7	84.8	14.7	89.8	16.0	82.2	7.9			
		Province	82.2	16.2	81.3	14.1	80.3	17.7	80.1	16.1	81.3	18.2			
	Mathematics 3	School	83.3	18.3	93.9	40.8	87.9	10.3	86.7	33.3	90.6	18.9	if set	if set	
		Authority	83.3	20.0	85.2	29.5	85.9	20.9	85.0	29.4	78.3	14.5			
		Province	80.3	26.1	82.0	26.9	79.9	23.5	78.7	23.9	79.7	26.8			
Grade 6	English Language Arts 6	School	86.0	14.0	91.7	13.3	90.0	22.0	92.1	31.7	90.2	24.6	if set	if set	
		Authority	72.5	10.9	79.0	5.9	88.8	14.3	86.7	20.4	85.2	13.7			
		Province	77.3	15.5	79.0	15.9	80.3	19.8	81.1	21.0	81.8	18.9			
	French Language Arts 6	School	83.3	16.7	92.3	7.7	75.0	0.0	75.0	0.0	100.0	12.5	if set	if set	
		Authority	83.3	16.7	92.3	7.7	75.0	0.0	75.0	0.0	100.0	12.5			
		Province	85.1	8.8	87.5	11.2	88.1	11.0	87.7	14.2	91.5	15.9			
	Mathematics 6	School	82.5	14.0	80.0	10.0	82.0	8.0	73.0	11.1	80.3	9.8	if set	if set	
		Authority	75.1	10.9	69.4	6.5	82.0	10.6	72.9	10.5	77.0	8.2			
		Province	78.2	18.1	75.2	15.6	74.0	14.5	74.6	15.9	76.6	16.8			
	Science 6	School	82.5	17.5	86.7	20.0	78.0	30.0	81.0	11.1	86.9	19.7	if set	if set	
		Authority	72.0	16.6	76.9	17.7	79.5	19.9	78.9	19.4	75.8	16.5			
		Province	79.8	26.0	78.1	27.7	75.2	26.6	74.8	24.1	76.5	24.8			
	Social Studies 6	School	84.2	21.1	80.0	10.0	86.0	20.0	76.2	9.5	n/a	n/a	if set	if set	
		Authority	66.3	10.4	74.7	9.7	83.9	14.9	80.6	18.3	n/a	n/a			
		Province	78.4	21.5	78.6	22.9	77.4	22.3	77.9	23.8	84.8	27.6			

		Results (in percentages)										Target	
		2005		2006		2007		2008		2009		2009	
		A	E	A	E	A	E	A	E	A	E	A	E
Overall	School	84.8	16.2	89.3	19.9	84.2	14.7	84.5	20.0	88.5	16.4	if set	if set
	Authority	69.3	11.6	74.7	12.0	75.7	13.3	75.4	15.3	75.4	11.2		
	Province	76.4	18.4	76.0	17.9	75.5	18.6	75.3	18.3	76.8	19.2		

Note: Data values have been suppressed where the number of students is less than 6. Suppression is marked with an asterisk (*). Aggregated PAT results are based upon a weighted average of Acceptable or Excellence percent meeting standards. The weights are the number of students in the cohort for the course.

Student Learning Achievement: PAT Values reported are weighted averages of PAT Acceptable and PAT Excellence results. Courses included: ELA (Grades 3, 6, 9), Math (Grades 3, 6, 9), Science (Grades 6, 9), French Language Arts (Grades 6, 9), Français (Grades 6, 9).

** "A" = Acceptable; "E" = Excellence — the percentages achieving the acceptable standard include the percentages achieving the standard of excellence.

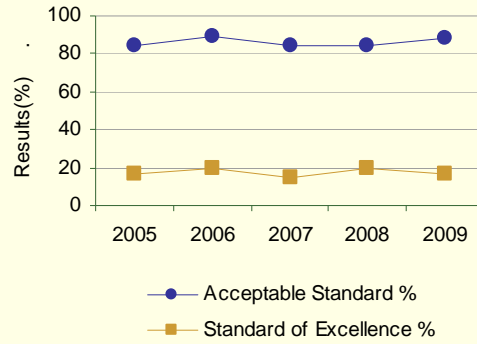
Comment on Results

- Gr. 3 English LA- Acceptable standard target of 91% surpassed
Excellence standard target of 14% not met
- Gr. 3 Math- Acceptable standard target of 88% surpassed
Excellence standard target of 25% not met
- Gr. 6 English LA- Acceptable standard target of 90% surpassed
Excellence standard target of 18% met
- Gr.6 French LA- Acceptable standard target of 80% surpassed
Excellence standard target of 12% met
- Gr.6 Math- Acceptable standard target of 80% surpassed
Excellence standard target of 12% not met
- Gr. 6 Science- Acceptable standard target of 81% not met
Excellence standard target of 20% met
- Gr. 6 Social Studies- no target set due to change in curriculum
no target set due to change in curriculum
- Standard of Excellence and Acceptable have not fluctuated much over 5 years
- French Language Arts greatly improved this year
- Math 3 and Math 6 standard of excellence declined

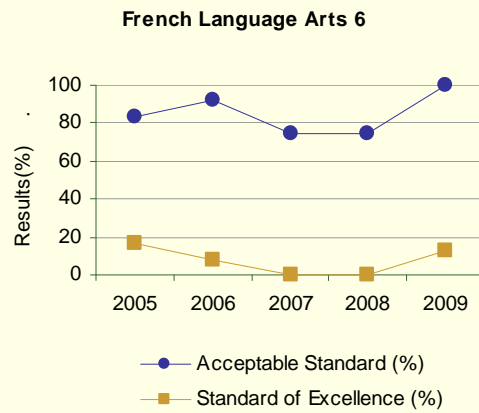
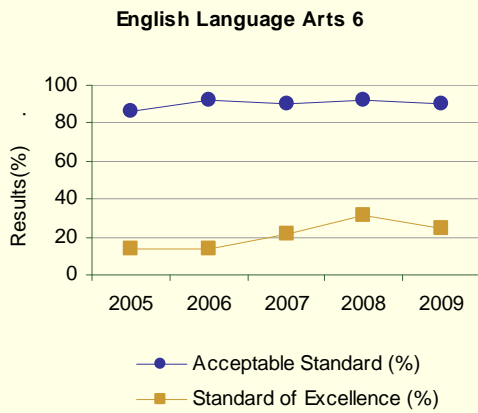
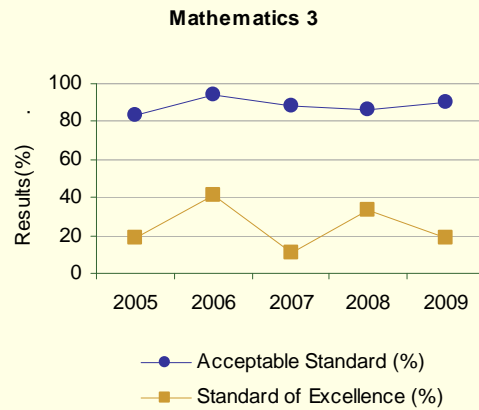
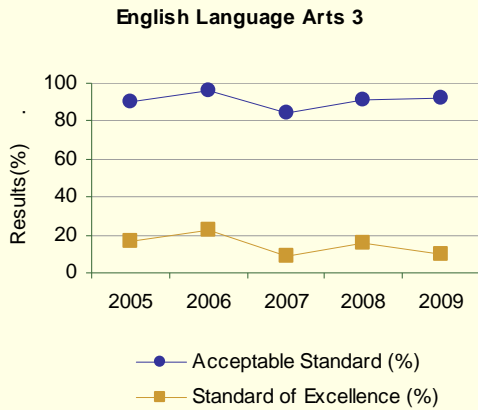
Strategies

- School Improvement Plans developed from PAT Results, Accountability and Scholie Survey Results, Staff and Parent Council Input.
- Annual school-based accountability pillar meetings held with Central Office staff.
- Continue to support professional learning communities
- Focus on Assessment for Learning as a strategy for improvement.
- Maintain and enhance Student Portfolios School Wide
- Maintain and enhance Pyramids of Intervention to help those students who need more time and support to be successful learners.
- Implement strategies in school improvement plans with a focus on providing students with opportunities for curriculum enrichment.
- Provide program supports for students with special needs.
- Emphasize early literacy and numeracy
- Incorporate technology applications into instruction.
- Curriculum handbooks made available to families.
- Encourage teachers to participate on curriculum and test committees.
- Provide cooperative planning through grade level meetings.
- Ensure teachers have access to Alberta Education digital data.
- Continue to support curriculum implementation through in-service and budget i.e. Consortia.
- Explore developing common timetable for Math and Language Arts.
- Exploring ways to align writing in Language Arts
- Continue to focus on Reading non-fiction SMART goal.

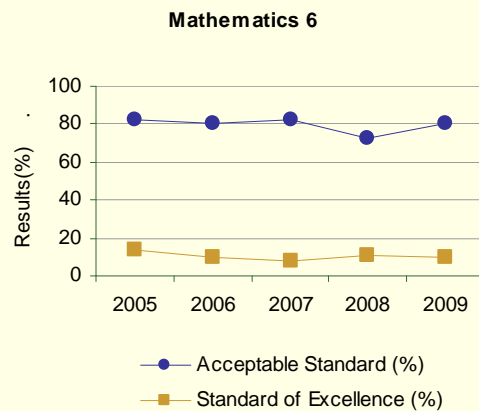
Graph of Overall School Results (optional)



Graph of Provincial Achievement Test Results by Course (optional)

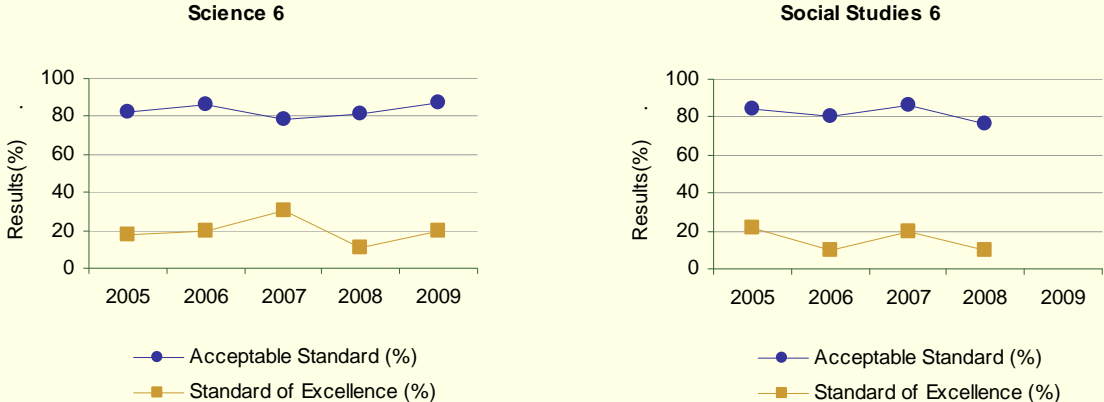


[No Data for Français 6]



Note: Data values have been suppressed where the number of students is less than 6. Suppression is marked with an asterisk (*).

Graph of Provincial Achievement Test Results by Course (optional)



Note: Data values have been suppressed where the number of students is less than 6. Suppression is marked with an asterisk (*).

Outcome: Students demonstrate high standards in learner outcomes. (continued)

Performance Measure			Results (in percentages)					Target
			2005	2006	2007	2008	2009	2009
Participation rates in provincial achievement tests (PATs) for Grades 3, 6 and 9.								
Grade 3	English Language Arts 3	School	96.7	98.0	96.6	97.3	98.1	if set
		Authority	95.6	96.6	92.1	95.2	88.8	
		Province	90.2	90.6	90.1	89.8	90.6	
	Mathematics 3	School	98.3	95.9	96.6	97.3	98.1	if set
		Authority	96.7	96.0	91.6	94.7	90.8	
		Province	90.8	90.8	90.5	90.5	91.2	
Grade 6	English Language Arts 6	School	94.7	98.3	98.0	95.2	95.1	if set
		Authority	90.2	93.0	93.8	93.9	94.5	
		Province	89.9	90.1	89.6	89.5	90.0	
	French Language Arts 6	School	100.0	92.3	91.7	93.8	100.0	if set
		Authority	100.0	92.3	91.7	93.8	100.0	
		Province	96.1	96.1	97.5	95.6	97.6	
	Mathematics 6	School	94.7	98.3	96.0	95.2	95.1	if set
		Authority	91.2	91.9	90.7	92.3	94.5	
		Province	90.9	90.6	90.0	90.0	90.6	
	Science 6	School	94.7	98.3	96.0	95.2	95.1	if set
		Authority	90.7	92.5	91.3	94.4	95.1	
		Province	90.6	90.0	89.1	89.0	89.6	
	Social Studies 6	School	94.7	98.3	96.0	95.2	n/a	if set
		Authority	89.1	94.1	91.9	95.0	n/a	
		Province	90.0	90.5	89.6	89.2	100.0	

Note: Data values have been suppressed where the number of students is less than 6. Suppression is marked with an asterisk (*).

Outcome: Students are well prepared for lifelong learning. (continued)

Performance Measure			Results (in percentages)					Target
			2005	2006	2007	2008	2009	2009
Percentage of teacher and parent satisfaction who agree that students are taught attitudes and behaviours that will make them successful at work when they finish school.	Overall (required)	School	65.2	77.4	78.6	94.3	84.8	if set
		Authority						
		Province	74.9	77.0	77.1	80.1	79.6	
	Teacher (optional)	School	90.5	86.4	90.5	95.8	95.8	
		Authority						
		Province	89.1	89.45	89.2	89.3	88.9	
	Parent (optional)	School	40.0	68.4	66.7	92.9	73.7	
		Authority						
		Province	60.8	64.6	65.1	70.9	70.2	

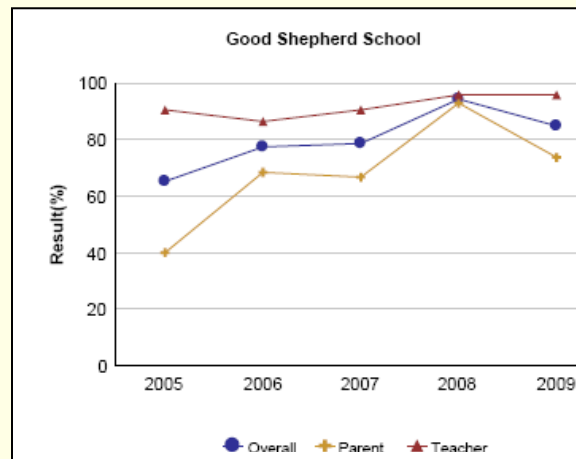
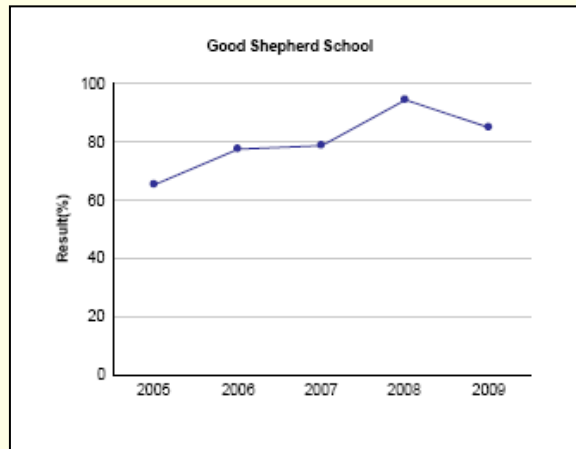
Comment on Results

- Overall school results are higher than provincial average
- Teacher results higher than parent results

Strategies

- Emphasize literacy and numeracy in elementary grades.
- Provide support for students with special learning needs.
- Provide students with skills in communication technology.
- Provide students with community role models.
- Continue to emphasize parental involvement.
- Develop specific FNMI plan for Aboriginal students

Graph of Overall School Results (optional)



Note: Data values have been suppressed where the number of respondents is less than 6. Suppression is marked with an asterisk (*).

Outcome: Students are well prepared for employment.

Performance Measure			Results (in percentages)					Target
			2005	2006	2007	2008	2009	2009
Percentages of teachers and parents who agree that students are taught attitudes and behaviours that will make them successful at work when they finish school.	Overall (required)	School	65.2	77.4	78.6	94.3	84.8	if set
		Authority	73.8	78.6	82.1	84.1	74.6	
		Province	74.9	77.0	77.1	80.1	79.6	
	Teacher (optional)	School	90.5	86.4	90.5	95.8	95.8	
		Authority	88.8	87.3	92.6	87.9	86.5	
		Province	89.1	89.4	89.2	89.3	88.9	
	Parent (optional)	School	40.0	68.4	66.7	92.9	73.7	
		Authority	58.8	69.8	71.5	80.3	62.7	
		Province	60.8	64.6	65.1	70.9	70.2	

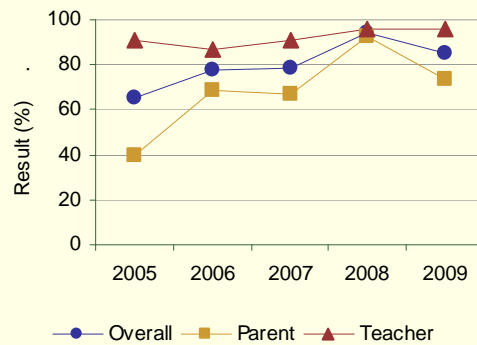
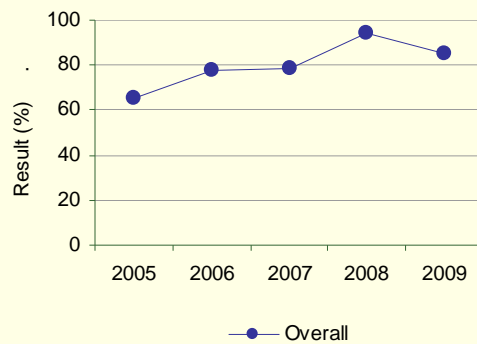
Comment on Results

- Results lower than last year but still higher than division and provincial results

Strategies

- Provide range of instructional programs to meet the needs of all learners.
- Ensure students achieve Learning Outcomes defined by Alberta Education.
- Promote healthy lifestyles in schools.
- Ensure students are well grounded in basic skills.
- Provide French Immersion and/or French as a Second Language programming.
- Support Catholic values to encourage vocations.
- Develop specific FNMI plans for aboriginal students.
- Maintain Alberta Education Initiatives for technology integration (wireless access, SMART boards, Sound Field Systems)
- Develop life skills programs for students in need
- Encourage and support student teachers accessing school for learning
- Utilize students to sell milk and hot lunch to promote "job" related skills.
- School patrol
- Student initiated fundraising activities.
- Public speaking at assemblies
- Recycling club
- Horticulture in spring

Graph of Overall School Results (optional)



Note: Data values have been suppressed where the number of respondents is less than 6. Suppression is marked with an asterisk (*).

Outcome: Students model the characteristics of active citizenship.

Performance Measure			Results (in percentages)					Target
			2005	2006	2007	2008	2009	2009
Percentages of teachers, parents and students who are satisfied that students model the characteristics of active citizenship.	Overall (required)	School	73.8	81.5	89.9	88.3	87.7	if set
		Authority	72.5	73.8	74.9	76.9	75.5	
		Province	75.3	76.8	76.6	77.9	80.3	
	Teacher (optional)	School	95.4	94.2	99.1	99.2	98.4	
		Authority	84.8	82.8	85.9	87.7	82.5	
		Province	89.5	90.3	89.9	90.6	91.8	
	Parent (optional)	School	61.3	76.6	86.1	91.3	90.0	
		Authority	69.1	74.4	72.1	79.2	77.9	
		Province	70.3	72.4	72.6	74.7	77.4	
	Student (optional)	School	64.8	73.8	84.5	74.4	74.7	
		Authority	63.6	64.2	66.5	63.8	66.1	
		Province	66.1	67.5	67.1	68.5	71.8	

Comment on Results

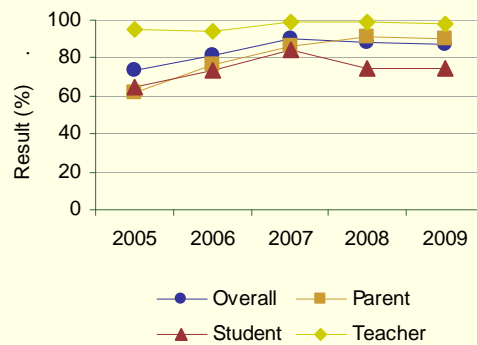
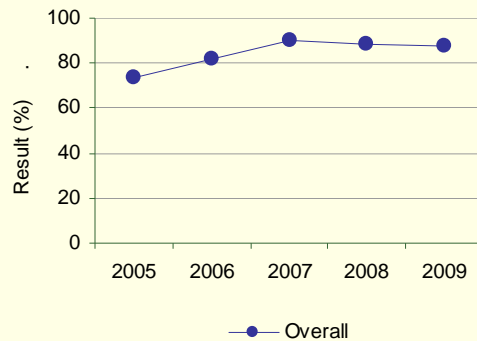
• Target of 82% for overall school results surpassed.

- Students praying together at assembly is seen to be a positive influence on this result
- Good Shepherd results are higher than provincial and division averages.

Strategies

- Permeate Catholic teaching throughout curriculum.
- Patriotic exercises conducted in school (O Canada and observance of Remembrance Day.)
- Teach values through religion program and Knights of the Month Program.
- Sustain safe and caring programs.
- Promote fine arts and athletics in schools. Maintain implementation of School Choir.
- Participate in Heritage Fair program.
- Involve students in community service projects (Hair for a Cure, Development and Peace, Food Bank, AMA Cross Walk Guards, Jump Rope for Heart and Terry Fox etc.)
- Good Shepherd will use Character and Citizenship Education Resources.
- Implement new Social Studies program
- Utilize students to sell milk and hot lunch to promote "job" related skills.
- School patrol
- Student initiated fundraising activities.
- Public speaking at assemblies
- Recycling club
- Horticulture in spring
- Student council
- Intramural peer coaching
- Reading and bus buddies
- Communication through class, community and school newsletters

Graph of Overall School Results (optional)



Note: Data values have been suppressed where the number of respondents is less than 6. Suppression is marked with an asterisk (*).

Also report results on all local authority/school Goal Two measures from the authority's/school's Three-Year Education Plan 2008/09 – 2010/11 in relation to Goal 2, Goal 2 outcomes and targets for 2008/09. Minimum one year of results – schools are encouraged to provide multi-year results for trend analysis.

Goal Three: Highly Responsive and Responsible Jurisdiction

Outcome: The authority demonstrates effective working relationships.

Performance Measure		Results (in percentages)					Target	
		2005	2006	2007	2008	2009	2009	
Percentage of teachers and parents satisfied with parental involvement in decisions about their child's education.	Overall (required)	School	74.1	75.2	83.0	93.8	93.3	if set
		Authority	78.6	76.9	79.2	81.7	74.9	
		Province	76.1	77.9	77.5	78.2	80.1	
	Teacher (optional)	School	92.2	95.7	96.4	97.6	96.7	
		Authority	84.2	83.0	85.1	84.3	79.8	
		Province	87.0	87.6	87.1	87.5	88.0	
	Parent (optional)	School	56.0	54.6	69.6	90.0	90.0	
		Authority	72.9	70.8	73.3	79.0	69.9	
		Province	65.2	68.1	67.9	69.0	72.2	

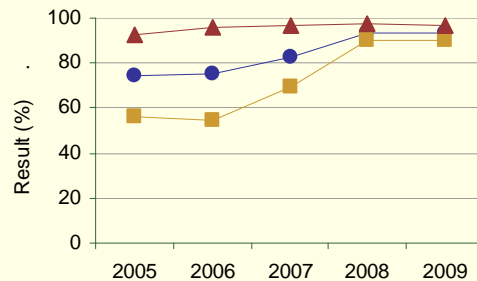
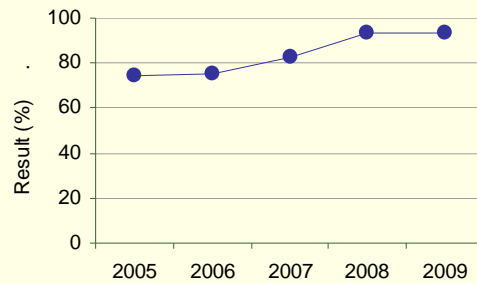
Comment on Results

- Target of 81% for overall school results surpassed
- Steady increase in results over the last few years
- Input in parent school council may play a positive factor

Strategies

- School Councils meet with Trustees on an annual basis.
- School maintains partnerships with local businesses.
- Student Health Initiative maintained.
- School works collaboratively with Children's Services and Mental Health.
- School Council is active in school improvement planning.
- School web page and communication tools are further developed.
- School maintains partnership with neighbouring school divisions.
- School appointed media relation.
- School maintains news in local paper.
- School maintains advertising in local media
- School continues to maintain partnerships with RCMP, Peace Region Anti-Bullying Committee, AADAC, Peace Health Region, Child and Family Services and FCSS.

Graph of Overall School Results (optional)



Note: Data values have been suppressed where the number of respondents is less than 6. Suppression is marked with an asterisk (*).

Outcome: The authority demonstrates leadership and continuous improvement.

Performance Measure		Results (in percentages)					Target	
		2005	2006	2007	2008	2009	2009	
Percentages of teachers, parents and students indicating that their school and schools in their jurisdiction have improved or stayed the same the last three years.	Overall (required)	School	73.6	83.9	89.2	86.6	92.6	if set
		Authority	73.8	75.8	80.0	81.9	77.7	
		Province	73.9	76.8	76.3	77.0	79.4	
	Teacher (optional)	School	76.2	91.3	90.5	87.5	87.0	
		Authority	70.1	77.6	79.3	81.4	77.5	
		Province	73.1	75.5	74.5	75.6	78.2	
	Parent (optional)	School	60.0	75.0	81.3	85.7	95.0	
		Authority	73.6	74.2	77.9	84.6	75.9	
		Province	70.9	75.4	75.1	75.9	78.1	
	Student (optional)	School	84.6	85.5	96.0	86.5	95.8	
		Authority	77.7	75.8	82.8	79.8	79.8	
		Province	77.9	79.4	79.3	79.5	81.8	

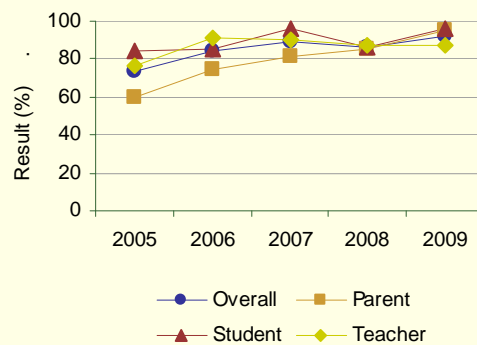
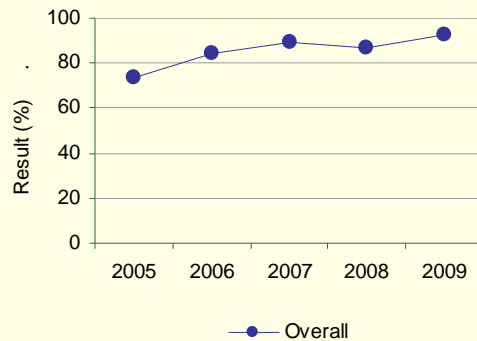
Comment on Results

- Overall school target of 79% surpassed.
- Good communication may have played a part in this measure being higher.
- Good results on Achievement tests and Accountability Surveys are a positive influence
- Steady increase in results over the last few years.

Strategies

- Maintain positive lines of communication with stake holders
- Ensure that parents are aware of improvement plans and that they are part of the process.
- School celebrates school success (Blue Day)

Graph of Overall School Results (optional)



Note: Data values have been suppressed where the number of respondents is less than 6. Suppression is marked with an asterisk (*).

Outcome: The authority demonstrates leadership and continuous improvement. (continued)

Performance Measure			Results (in percentages)					Target
			2005	2006	2007	2008	2009	2009
The percentage of teachers reporting that in the past 3-5 years the professional development and in-servicing received from the school authority has been focused, systematic and contributed significantly to their ongoing professional growth.	Overall (required)	School	84.1	100.0	92.4	96.0	89.3	if set
		Authority	80.2	86.7	87.1	92.2	82.2	
		Province	76.5	78.2	78.8	80.4	81.5	
	Teacher (optional)	School	84.1	100.0	92.4	96.0	89.3	
		Authority	80.2	86.7	87.1	92.2	82.2	
		Province	76.5	78.2	78.8	80.4	81.5	

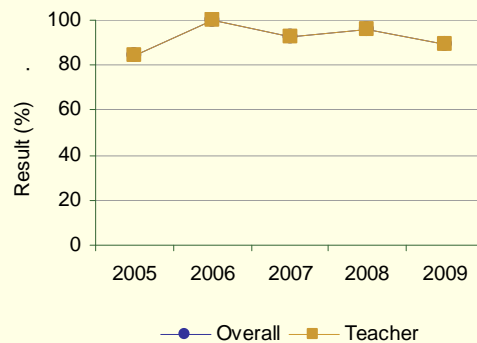
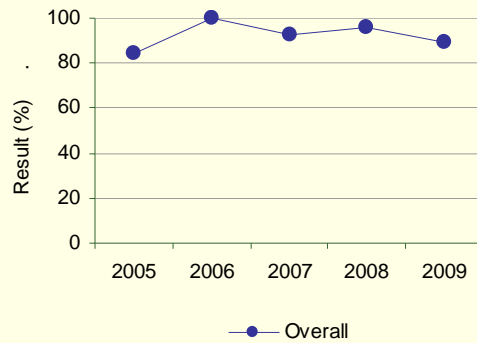
Comment on Results

- Overall target of 94% not met
- Results over the last few years have been declining

Strategies

- Survey staff and provide PD based on their requests.
- Enhance opportunities for staff to access PD funds
- Promote active participation in PD and PLC's
- Offer cross divisional PLC's
- Maintain communication with jurisdiction AISI project and coordinator

Graph of Overall School Results (optional)



Note: Data values have been suppressed where the number of respondents is less than 6. Suppression is marked with an asterisk (*).

Goal Four: Success for First Nations, Metis and Inuit (FNMI) students

Outcome: FNMI students are well prepared for citizenship, the workplace and post-secondary education and training.

Performance Measures [results required to be reported in 2010]
<ul style="list-style-type: none"> Elementary completion rates of self-identified FNMI students tracked from Kindergarten to grade six.
Strategies <ul style="list-style-type: none"> Support student learning via active participation of FNMI worker in academic programs Maintain strong support and home communication through FNMI worker Develop and enhance celebration of cultural activities in the school (Hand Games, Elder Visits, Cultural Dancing, etc.) Cultural sensitivity training maintained and enhanced (Broken Feather Video etc.)

Outcome: Key outcomes for FNMI students improve.

Performance Measures [results required to be reported in 2010]
<ul style="list-style-type: none"> Overall percentage of self-identified FNMI students who achieved the acceptable standard and overall percentage who achieved the standard of excellence on provincial achievement tests.
Strategies <ul style="list-style-type: none"> School Improvement Plans developed from PAT Results, Accountability and Scholie Survey Results, Staff and Parent Council Input. Annual school-based accountability pillar meetings held with Central Office staff. Continue to support professional learning communities Focus on Assessment for Learning as a strategy for improvement. Maintain and enhance Student Portfolios School Wide Maintain and enhance Pyramids of Intervention to help those students who need more time and support to be successful learners. Implement strategies in school improvement plans with a focus on providing students with opportunities for curriculum enrichment. Provide program supports for students with special needs. Emphasize early literacy and numeracy Incorporate technology applications into instruction. Curriculum handbooks made available to families. Encourage teachers to participate on curriculum and test committees. Provide cooperative planning through grade level meetings. Ensure teachers have access to Alberta Education digital data. Continue to support curriculum implementation through in-service and budget i.e. Consortia. Explore developing common timetable for Math and Language Arts. Exploring ways to align writing in Language Arts Continue to focus on Reading non-fiction SMART goal. FNMI worker to actively support student learning FNMI worker will maintain close contact between school and home

Provide:

- School council was involved in the annual education results report by reviewing the data and suggesting strategies for improvement.
- <http://www.hfcrd.ab.ca/averageclasssize.htm>

